

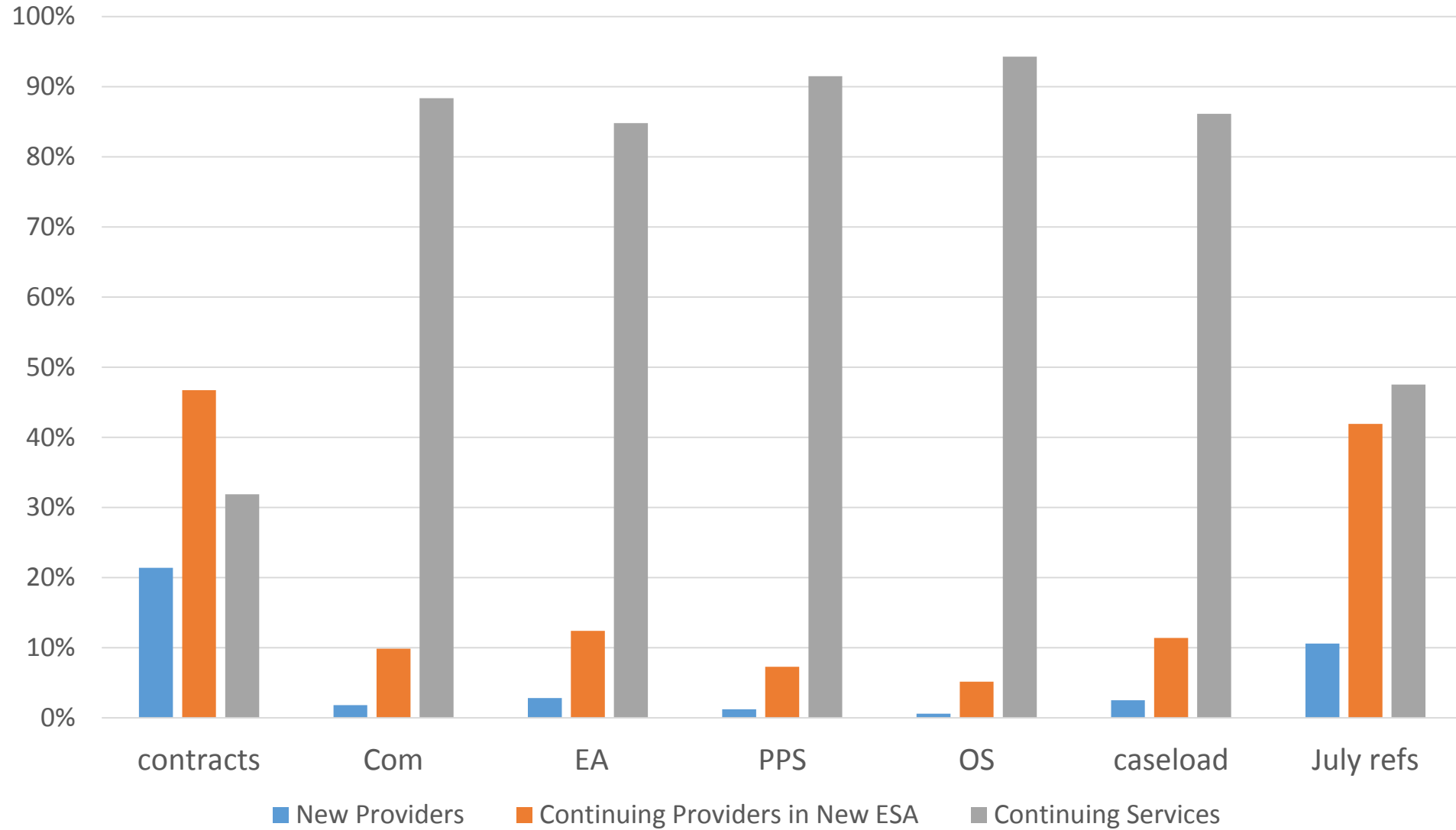


Australian Government

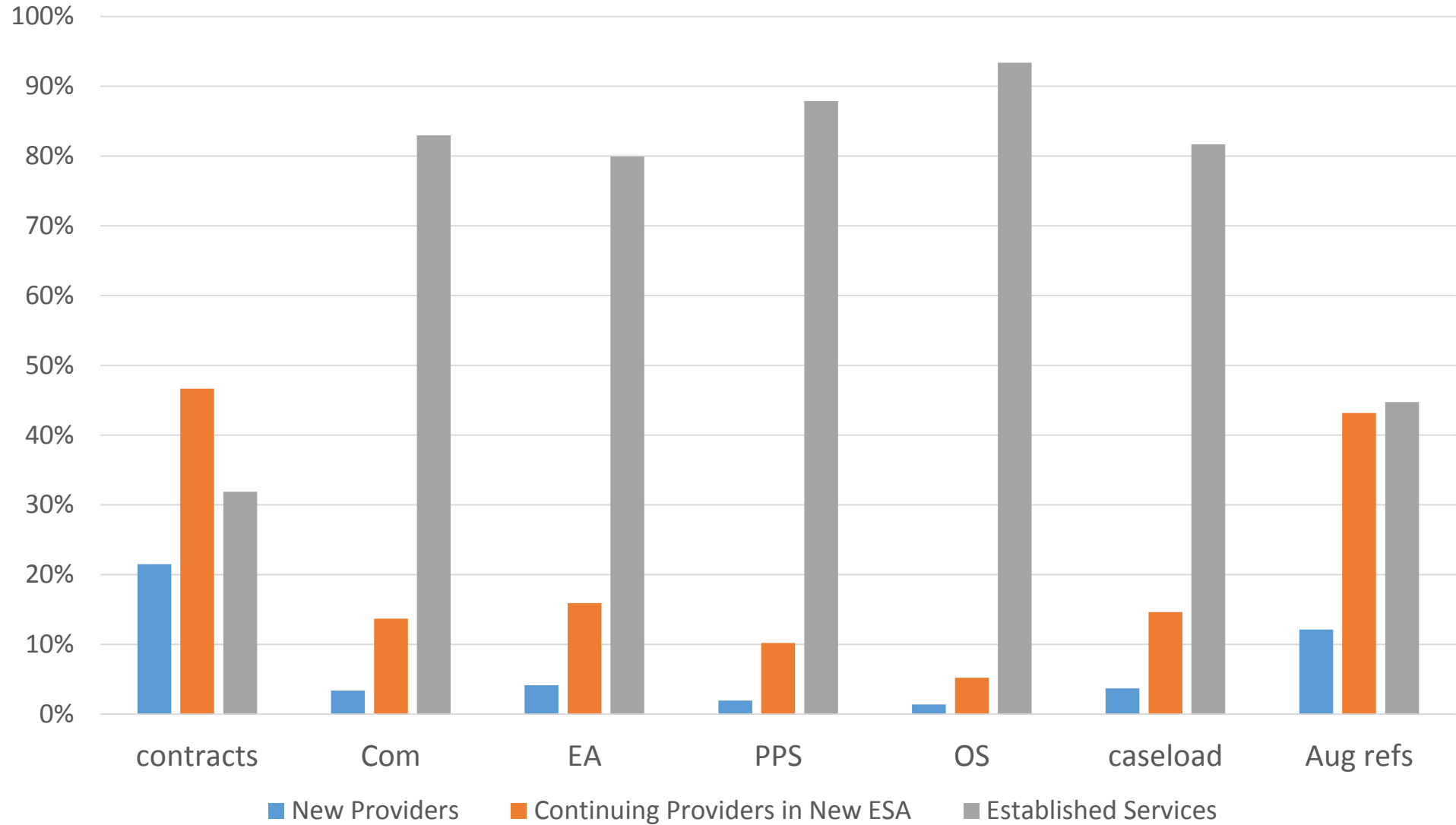
Department of Social Services

The first two months...

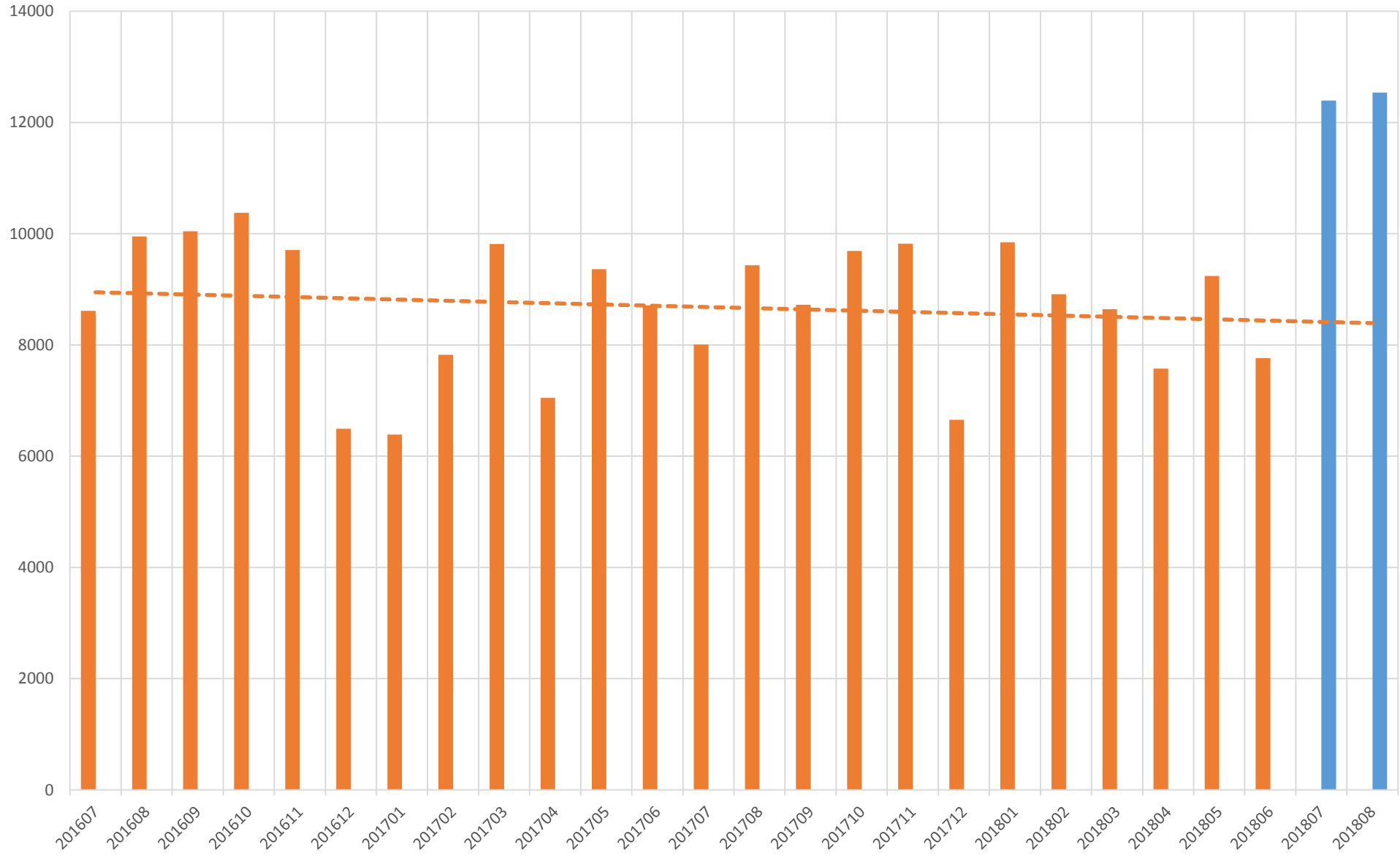
Continuing Services, Continuing Providers New Services, New Providers Shares of Contracts, Caseload, and Referrals - as at July 2018



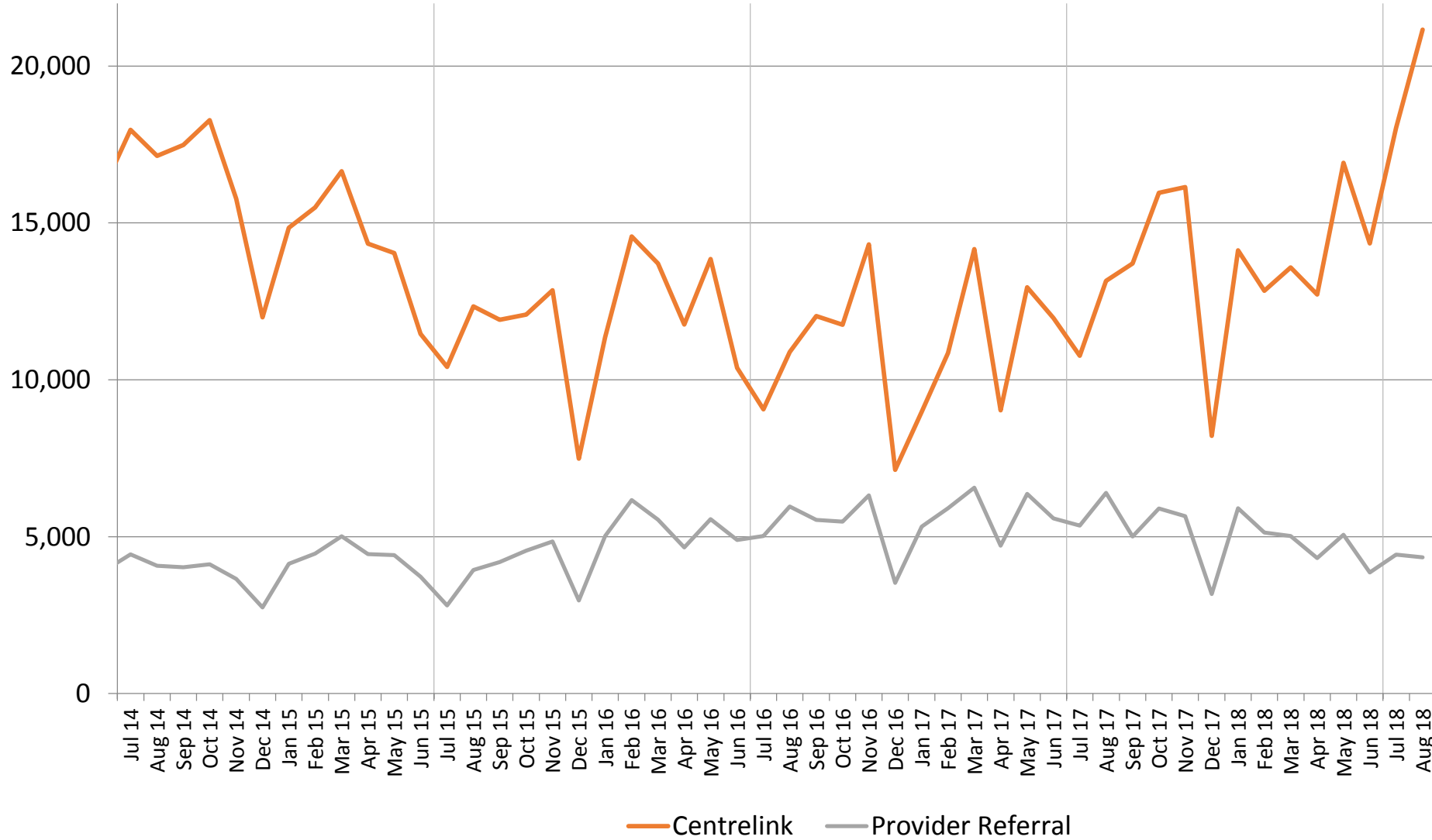
Continuing Services, Continuing Providers New Services - New Providers
Shares of Contracts, Caseload, and Referrals - as at 31 August 2018



Monthly Referrals to DES - July 2016 to August 2018



All Assessments Referrals Monthly by who made referral



Job Placement Claims

