



**Concurrent Session**

1:30pm – 2.15pm  
in M9



@Disabilityemplt  
#DES2016  
@FrankGQuinlan

# Mental Health and the NDIS

---

Frank Quinlan  
CEO,  
Mental Health Australia



# Mental Health Australia



## Mental Health & the NDIS

@FrankGQuinlan

## Australia's Disability Employment Conference

August 2016

Mentally healthy people,  
mentally healthy communities

[mhaustralia.org](http://mhaustralia.org)





# Wheels in motion

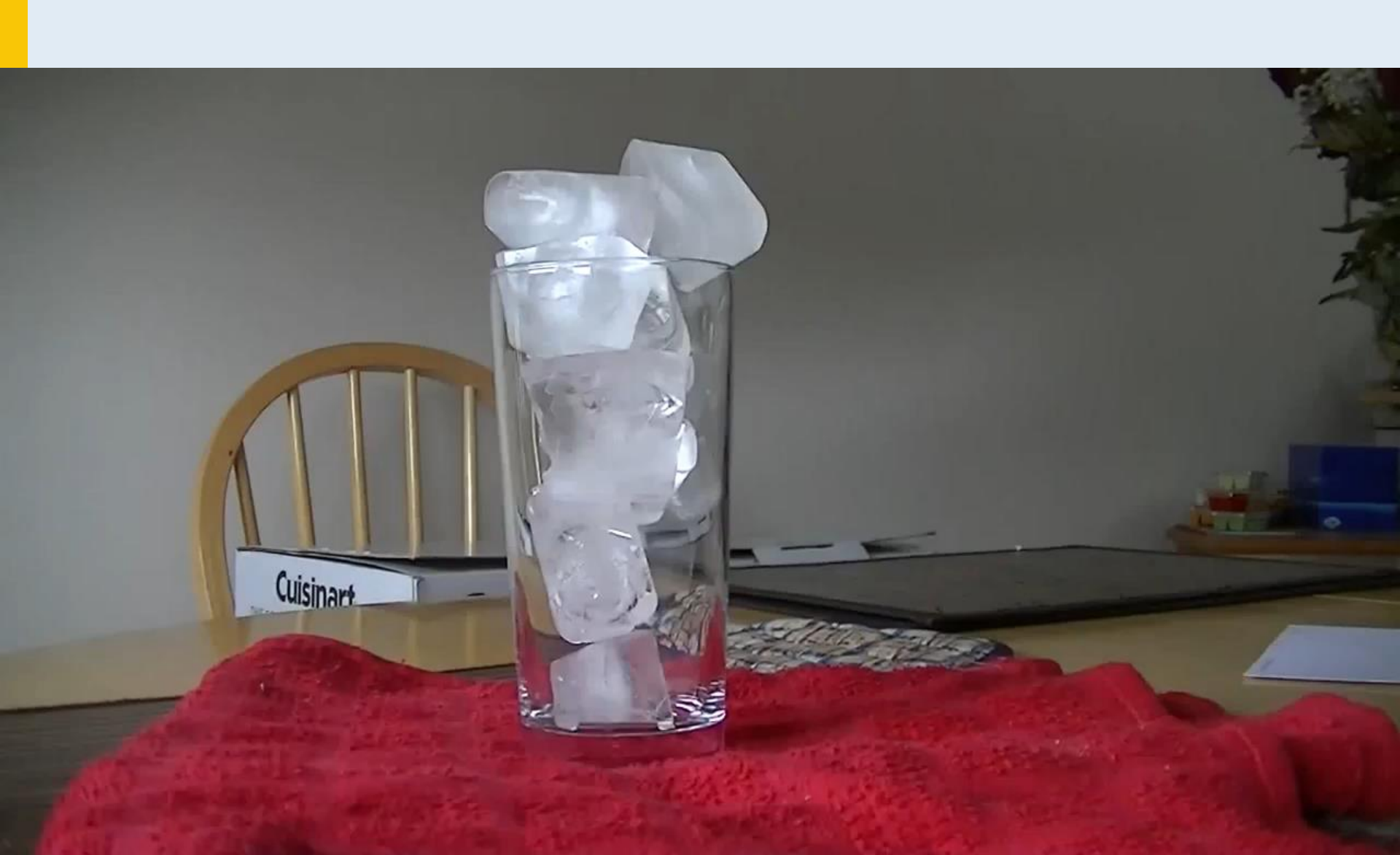
- Implementation of the Government response to the National Mental Health Commission's Review of Mental Health Services and Programmes
- 5<sup>th</sup> Plan for Mental Health and Suicide Prevention
- NDIS rollout
- Ice Taskforce response
- Health care in the home



# Government response to 2014 NMHC Review

- Primary Health Networks
- Digital Gateway
- National Leadership through 5<sup>th</sup> Plan





# 5<sup>th</sup> Plan for mental health & suicide prevention



## 5<sup>th</sup> Plan for mental health & suicide prevention

*There is in fact no such thing as a mental health 'system'; instead, this 'system' is shorthand for the many systems and services consumers and carers may encounter.*

*For the most part, these services and systems are poorly integrated, overseen by different parts of government, based on widely differing organising principles, and not working towards a common goal.*





## 5<sup>th</sup> Plan for mental health & suicide prevention

*The Commonwealth and the States and Territories both have roles in policy, funding, and regulation in mental health.*

*These roles have evolved in piecemeal fashion and have usually not been defined with respect to an overarching vision shared across governments and portfolios. It is therefore no surprise that consumers find the system enormously difficult to navigate...*



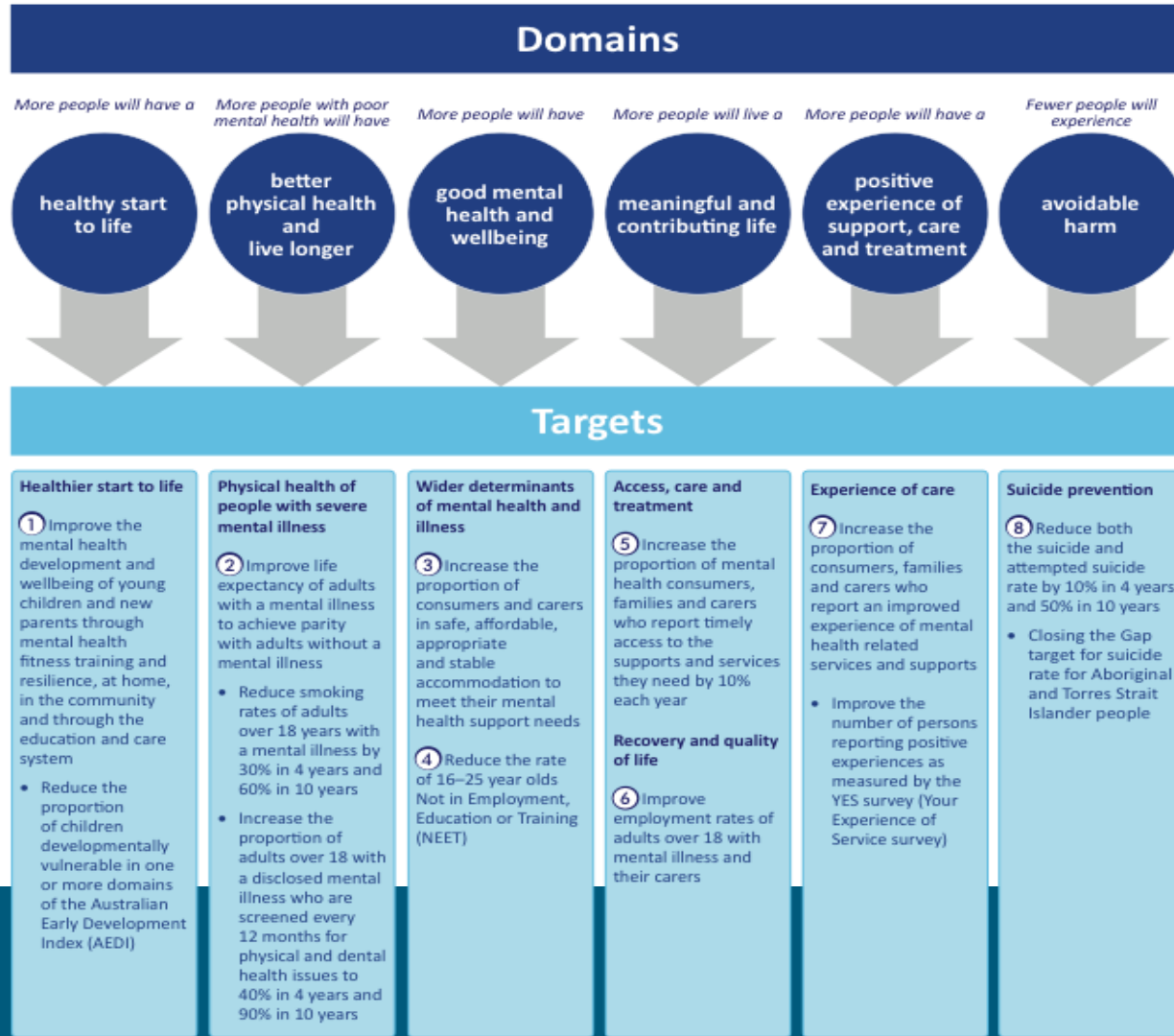
# 5<sup>th</sup> Plan for mental health & suicide prevention

*In 2012, the Council of Australian Governments (COAG) committed to the development of*

*“whole-of-life and outcome-based national indicators and targets.”*



# Indicators and targets



# National Disability Insurance Scheme

- Individual choice and control
- Tier 3 packages of “reasonable and necessary” support
- ILC supports yet to be determined
- Challenges fitting the square psychosocial disability peg into the round NDIS hole
- Challenges to unpack “permanent disability” with episodic illness and “recovery” practice



# National Disability Insurance Scheme & Mental Health

- Resolving the target population
- Safeguarding access to services
- Resolving NDIS service pricing
- Preparing for the Productivity Commission Review



# National Disability Insurance Scheme

- Resolving the target population
- Safeguarding access to services
- Resolving NDIS service pricing
- Preparing for the Productivity Commission Review



How are we ever going to evolve  
if you people keep pushing us  
back into the ocean?



1  
© DAN  
BIZARRO.  
3.7.13



Dist. by King Features



# Mental Health Australia



## Mental Health & the NDIS

@FrankGQuinlan

## Australia's Disability Employment Conference

August 2016

Mentally healthy people,  
mentally healthy communities

[mhaustralia.org](http://mhaustralia.org)

